

## CURVES POLO

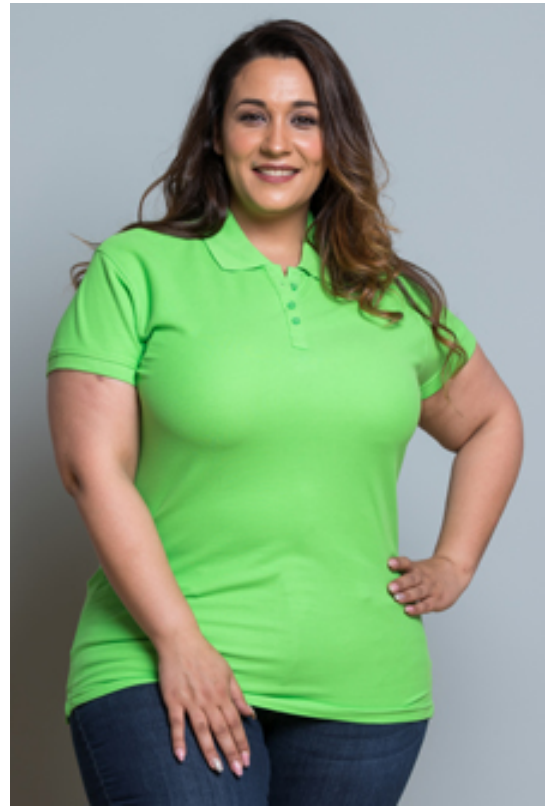
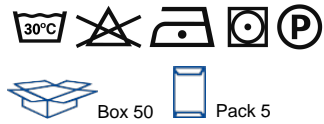
### CURVSPOLO

**Short sleeve pique polo for women in large sizes, 100% cotton.** Removable label Ideal for embroidery, screen printing or customize with transfer or vinyl. 6 colors Also available for men and children.

Details:

- Piqué fabric.
- Three-button placket with bottom box-stitch reinforcement.
- 1x1 rib on collar and cuffs.
- Side vents.
- 200 g/m<sup>2</sup>
- 100% Preshrunk Combed Cotton

100% preshunk combed cotton. Weight: 200 g/m<sup>2</sup> (Pg. 55 catalog)



## SIZE

EU	S	M	L	XL
Width	56 cm 22"	58 cm 22.8"	60 cm 23.6"	62 cm 24.4"
Length	73 cm 28.7"	73 cm 28.7"	75 cm 29.5"	75 cm 29.5"

## COLOURS

