

# KARIBAN

**REFERENCE :** K115

**SIZES :** L\_XL

**COMPOSITION :**

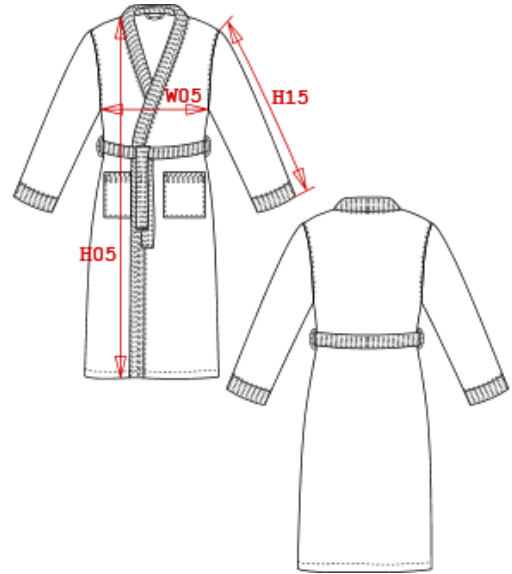
Main fabric : Terry 400 100%cotton

**WEIGHT :**

Main fabric : 400 gsm

**ARTICLE WEIGHT :**

1302 gr/pc



DESCRIPTION	
<b>Français :</b>	Peignoir col kimono
<b>English :</b>	Kimono towel robe
<b>Nederlands :</b>	Badjas met kimonohals
<b>Deutsch :</b>	Kimonobademantel
<b>Español :</b>	Albornoz col kimono
<b>Italiano :</b>	Accappatoio a kimono
<b>Português :</b>	Robe kimono

COLORS	PANTONE SERIGRAPHIE
Navy	534C
White	White

MEASUREMENT							
Description	L	XL					
<b>W05</b> 1/2 largeur poitrine / 1/2 chest width	55	57					
<b>H05</b> Hauteur totale / Total height	122	127					
<b>H15</b> Longueur manche / Sleeve length	55	55					

CARE LABEL				

PACKING	
Box	10 pcs / box L => L:40cm W:60cm H:40cm GW:13.50kg NW:12.50kg XL => L:40cm W:60cm H:40cm GW:13.80kg NW:12.80kg