

# KARIBAN

**REFERENCE :** K252

**SIZES :** XS\_S\_M\_L\_XL\_XXL

**COMPOSITION :**

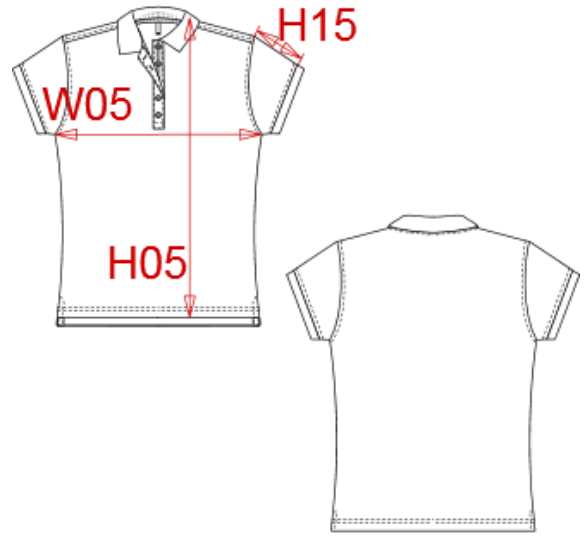
Main fabric : Good carded cotton pique - 220 100%cotton  
Main fabric : Cotton twill 210 For half moon and front placket  
100%cotton

**WEIGHT :**

Main fabric : 220 gsm  
Main fabric : 210 gsm

**ARTICLE WEIGHT :**

185 gr/pc



DESCRIPTION	
<b>Français :</b>	Polo manches courtes femme
<b>English :</b>	Ladies' short sleeve polo shirt
<b>Nederlands :</b>	Dames polo korte mouwen
<b>Deutsch :</b>	DAMEN KURZARM POLO
<b>Español :</b>	Polo de manga corta para mujer
<b>Italiano :</b>	POLO DONNA MANICHE CORTE
<b>Português :</b>	Polo de senhora manga curta

COLORS	PANTONE SERIGRAPHIE
Red / White / Navy	200C / White / 296C
Navy / White / Red	296C / White / 200C
White / Navy / White	White / 296C / White

MEASUREMENT							
Description	XS	S	M	L	XL	XXL	
<b>H05</b> Hauteur totale devant / Front total height	61	62,50	64	65,50	67	69,25	
<b>W05</b> 1/2 largeur poitrine / 1/2 chest width	44	46	48	50	52	55	
<b>H15</b> Longueur manche / Sleeve length	10,80	11,15	11,50	11,85	12,20	12,75	

CARE LABEL				

PACKING	
Box	25 pcs / box XS-S => L:45cm W:35cm H:18cm GW:7.20kg NW:6.00kg M-L => L:48cm W:37cm H:18cm GW:8.00kg NW:7.00kg XL-XXL => L:52cm W:37cm H:18cm GW:9.00kg NW:7.60kg