

KARIBAN

REFERENCE : K259

SIZES : XS_S_M_L_XL_XXL

COMPOSITION :

Main fabric : Ring spun Combed Cotton pique preshrunk - 180
100%cotton

Main fabric : Ring spun Combed Cotton pique preshrunk - 180
For contrasted inner front tab 100%cotton

Main fabric : Ring spun Combed Cotton/Viscose pique
preshrunk 90/10 - 180 For heather colors
For contrasted inner front tab 90%cotton / 10%viscose

WEIGHT :

Main fabric : 180 gsm

Main fabric : 180 gsm

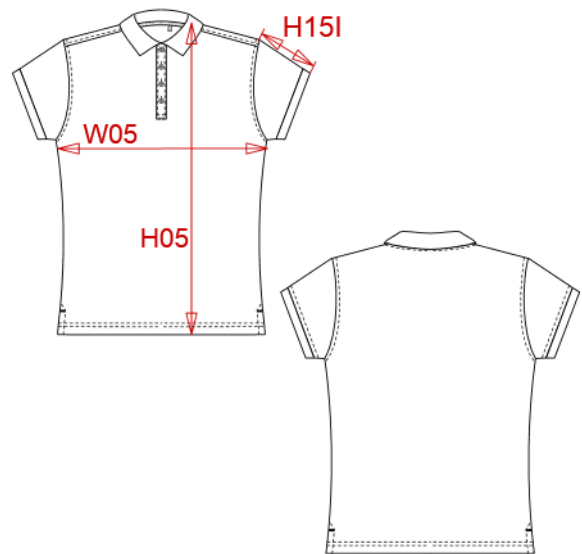
Main fabric : 180 gsm

TECHNICAL DETAIL :

Preshrunk

ARTICLE WEIGHT :

160 gr/pc



DESCRIPTION
Français : Polo piqué bicolore femme
English : Ladies' two-tone piqué polo shirt
Nederlands : Piqué-damespolo tweekleurig
Deutsch : Zweifarbiges Piqué-Polohemd für Damen
Español : Polo piqué bicolor de mujer
Italiano : Polo piqué bicolore donna
Português : Polo de senhora piqué bicolor

COLORS	PANTONE SERIGRAPHIE
Black / Oxford grey	Black / -
Navy / Oxford grey	296C / -
White / Oxford grey	White / -
Light royal blue / Oxford grey	653C / -
Red / Black	200C / Black

MEASUREMENT						
Description	XS	S	M	L	XL	XXL
H05 (L) Hauteur totale / Total height	60,25	62,25	64,25	66,25	68,25	70,25
W05 (L) 1/2 largeur poitrine / 1/2 chest width	43	46	49	52	55	58
H15I (L) Longueur manche avec bord côte / Sleeve length with rib	14,50	15,25	16	16,75	17,50	18,25

CARE LABEL					
		For solid colors	For heather colors		

PACKING	
Box	50 pcs / box XS=> L:47cm W:34cm H:28cm GW:8.63kg NW:7.6kg S => L:47cm W:34cm H:28cm GW:8.63kg NW:7.6kg M => L:50cm W:34cm H:28cm GW:9.57kg NW:8.50kg L => L:50cm W:34cm H:28cm GW:9.57kg NW:8.5kg XL => L:54cm W:36cm H:28cm GW:10.67kg NW:9.5kg XXL => L:54cm W:36cm H:28cm GW:10.67kg NW:9.5kg