

KARIBAN

REFERENCE : K442

SIZES : XS_S_M_L_XL_XXL_3XL_4XL

COMPOSITION :

Main fabric : Brushed Cotton / Polyester fleece 80/20 - 360
80%cotton / 20%polyester

WEIGHT :

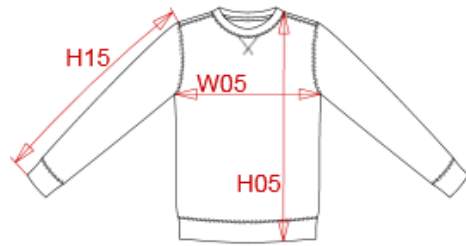
Main fabric : 360 gsm

FABRIC CONSTRUCTION AND FINISHING :

Low shrinkage / Silicon finish

ARTICLE WEIGHT :

535 gr/pc



| DESCRIPTION | |
|---------------------|-------------------------------|
| Français : | Sweat-shirt encolure ronde |
| English : | Crew neck sweatshirt |
| Nederlands : | Sweater met ronde hals |
| Deutsch : | Rundhals sweatshirt |
| Español : | Sudadera cuello redondo |
| Italiano : | Felpa girocollo |
| Português : | Sweatshirt com decote redondo |

| COLORS | PANTONE SERIGRAPHIE |
|------------------|---------------------|
| White | White |
| Black | Black |
| Navy | 296C |
| Dark grey | 432C |
| Red | 200C |
| Dark khaki | 418C |
| Light royal blue | 7685C |
| Oxford grey | - |

| MEASUREMENT | | | | | | | | | |
|---|-------|-------|-------|-------|-------|-------|-------|-----|--|
| Description | XS | S | M | L | XL | 2XL | 3XL | 4XL | |
| H05 Hauteur totale avec BC / Total height with rib | 67,50 | 69,50 | 71,50 | 73,50 | 75,50 | 77,50 | 80,25 | 83 | |
| W05 1/2 largeur poitrine / 1/2 chest width | 51 | 54 | 57 | 60 | 63 | 66 | 70 | 74 | |
| H15 Longueur manche avec BC / Sleeve length with rib | 63 | 65 | 67 | 69 | 71 | 73 | 75 | 77 | |

| CARE LABEL | | | | |
|------------|--|--|--|--|
| | | | | |

| PACKING | |
|---------|--|
| Box | 20 pcs / box XS => L:58.1cm W:37.8cm H:32cm GW:10.45kg NW:8.80kg S => L:58.1cm W:37.8cm H:32cm GW:10.95kg NW:9.30kg M => L:58.1cm W:37.8cm H:42cm GW:11.65kg NW:10.00kg L => L:58.1cm W:37.8cm H:42cm GW:12.40kg NW:10.75kg XL => L:58.1cm W:37.8cm H:42cm GW:13.15kg NW:11.50kg XXL => L:58.1cm W:37.8cm H:42cm GW:14.25kg NW:12.60kg 3XL => L:58.1cm W:37.8cm H:54cm GW:15.25kg NW:13.60kg 4XL => L:58.1cm W:37.8cm H:54cm GW:16.00kg NW:14.35kg |