

KARIBAN

REFERENCE : K517

SIZES : S_M_L_XL_XXL_3XL

COMPOSITION :

Main fabric : Cotton poplin 110 100%cotton

Main fabric : Cotton poplin 110 Striped fabric

For inner collar band, inner cuff and inner front tab 100%cotton

WEIGHT :

Main fabric : 105-110 gsm

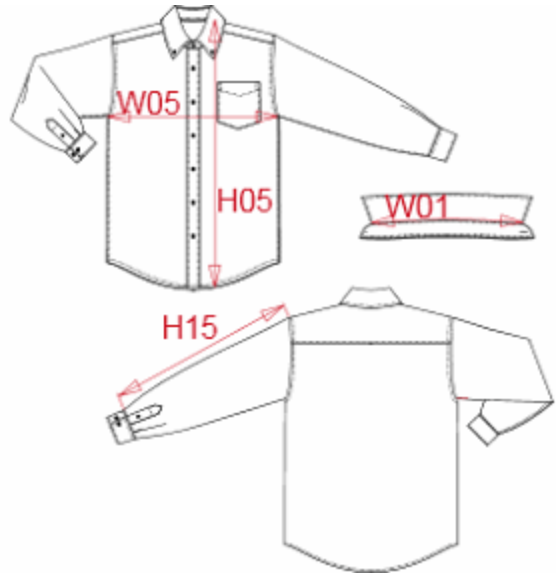
Main fabric : 105-110 gsm

FABRIC CONSTRUCTION AND FINISHING :

Garment washed

ARTICLE WEIGHT :

240 gr/pc



DESCRIPTION										COLORS		PANTONE SERIGRAPHIE	
Français : Chemise popeline lavée manches longues homme English : Men's long sleeve washed popeline shirt Nederlands : Deutsch : PFLEGELEICHTES POPELINE HERREN LANGARM HEMD Español : CAMISA DE MANGA LARGA POPELINA LAVADA PARA HOMBRE Italiano : CAMICIA UOMO POPELINE MANICHE LUNGHE Português : Camisa manga comprida em popeline pré lavada										White		White	
										Navy		296C	
										Blue		2152C	
MEASUREMENT													
Description	Tol +/-	Tol +/- Taille max	S	M	L	XL	XXL	3XL					
W01 Longueur encolure / Neckline length			41,25	42,50	43,75	45	46,25	48					
W05 1/2 largeur poitrine / 1/2 chest width	3,0%	2,5%	51	54	57	60	63	66					
H15 Longueur manche sans poignet / Sleeve length without cuff			59,50	61,50	63,50	65,50	67,50	69,50					
H05 Hauteur totale dos / Back total height			76	78	80	82	84	86					
CARE LABEL													
PACKING													
Box	12 pcs / box All sizes => L:56cm W:37cm H:24cm GW:5.40kg NW:3.50kg												