

KARIBAN

REFERENCE : K609

SIZES : S_M_L_XL_XXL_3XL_4XL

COMPOSITION :

Main fabric : Polyamide 189T taslon ottoman PU coating - 135 100%polyamide

Mesh : Mesh 65 For body lining 100%polyester

Lining 2 : Lining 210T For sleeve lining and inner pocket sack 100% polyester

WEIGHT :

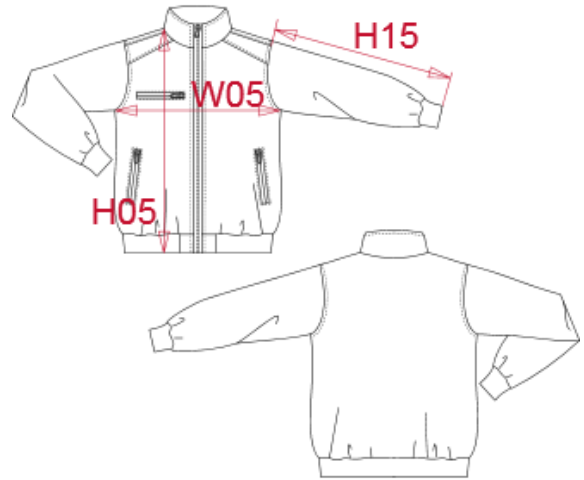
Main fabric : 135 gsm

Mesh : 65 gsm

Lining 2 : 60 gsm

ARTICLE WEIGHT :

620 gr/pc



DESCRIPTION	
Français :	Blouson city
English :	City blouson jacket
Nederlands :	Heren jas
Deutsch :	City jacket
Español :	Bluson city
Italiano :	Giubbotto bomber
Português :	Blusão city

COLORS	PANTONE SERIGRAPHIE
Black / White / Blue	Black / White / 7461C
Navy / White / Storm grey	296C / White / Cool gray 10C
Red / White / Navy	200C / White / 296C

MEASUREMENT							
Description	S	M	L	XL	XXL	3XL	4XL
H05 Hauteur totale avec BC / Total height with rib	73,50	75,50	77,50	79,50	81,50	83,50	86,25
W05 1/2 largeur poitrine / 1/2 chest width	57	60	63	66	69	72	76
H15 Longueur manche avec BC / Sleeve length with rib	69	71	73	75	77	79	81

CARE LABEL				

PACKING	
Box	10 pcs / box S-M => L:56cm W:35cm H:12cm GW:7.50kg NW:6.50kg L-XL => L:58cm W:37cm H:12cm GW:7.50kg NW:6.50kg XXL-4XL => L:60cm W:39cm H:12cm GW:7.50kg NW:6.50kg