

KARIBAN

REFERENCE : K6110

SIZES : S_M_L_XL_XXL_3XL_4XL

COMPOSITION :

Fabric 1 : Polyamide 380T PA coating- 36 For Garment and packable bag 100%polyamide

Fabric 2 : Polyester 380T PA coating- 47 For Garment and packable bag 100% polyester

Fabric 1 : Polyamide 380T PA coating- 36 For inside garment and pockets 100%polyamide

Wad 1 : Padding Polyester fake down (micro broken) - 260/270 Inside body,sleeve and hood 100%polyester

WEIGHT :

Fabric 1 : 36 gsm

Fabric 2 : 47gsm

Fabric 1 : 36 gsm

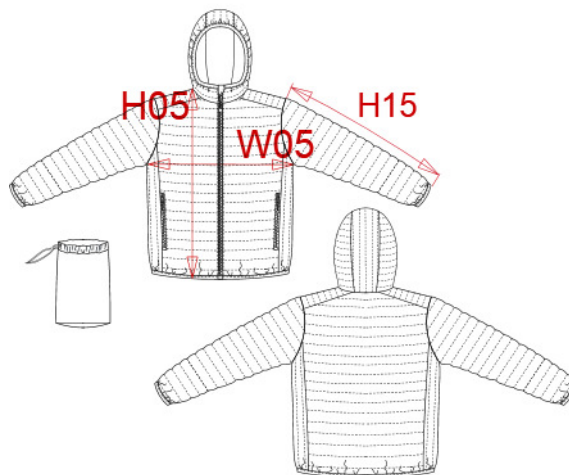
Wad 1 : 260/270 gsm

TECHNICAL DETAIL :

Coating for fake down proof

ARTICLE WEIGHT :

526 gr/pc



DESCRIPTION	COLORS	PANTONE SERIGRAPHIE
Français : Doudoune légère capuche homme	Black	Black
English : Men's lightweight hooded down jacket	Navy	296C
Nederlands : Lichte herenjas met capuchon	Light royal blue	653C
Deutsch : Leichte Herren-Steppjacke mit Kapuze	Red	200C
Español : Chaqueta acolchada ligera con capucha para hombre	Marl dark grey	-
Italiano : Piumino uomo leggero con cappuccio	Marl silver	-
Português : Blusão acolchoado leve com capuz	White	White

MEASUREMENT							
Description	S	M	L	XL	XXL	3XL	4XL
H05 Hauteur totale terminée / Total height after sewing	70	72	74	76	78	80	82
W05 1/2 largeur poitrine terminée/ 1/2 chest width after sewing	54	57	60	63	66	69	72
H15 Longueur manche / Sleeve length	68,75	69,75	70,75	71,75	72,75	73,75	74,75

CARE LABEL				

PACKING	
Box	5 pcs / box All sizes => L:60cm W:42cm H:14cm GW:3.8kg NW:2.8kg