

# KARIBAN

**REFERENCE :** K6112

**SIZES :** 6/8\_8/10\_10/12\_12/14

**COMPOSITION :**

Fabric 1 : Polyamide 380T PA coating- 36 100%polyamide

Fabric 1 : Polyamide 380T PA coating- 36 For inside garment and pockets 100%polyamide

Wad 1 : Padding Polyester fake down (micro broken) - 260/270 Inside body,sleeve and hood 100%polyester

**WEIGHT :**

Fabric 1 : 36 gsm

Fabric 1 : 36 gsm

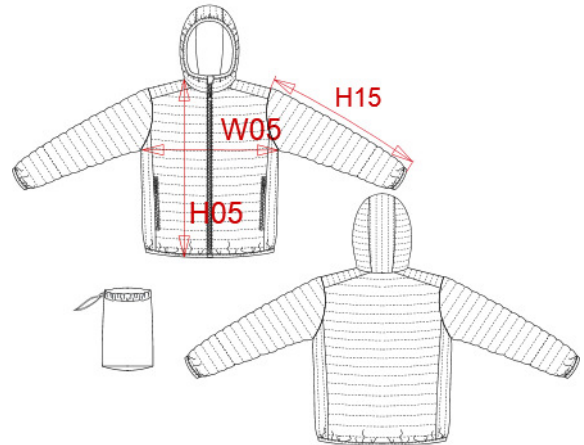
Wad 1 : 260/270 gsm

**TECHNICAL DETAIL :**

Coating for fake down proof

**ARTICLE WEIGHT :**

350 gr/pc



DESCRIPTION	
<b>Français :</b>	Doudoune légère capuche enfant
<b>English :</b>	Kids' lightweight hooded down jacket
<b>Nederlands :</b>	Lichte kinderjas met capuchon
<b>Deutsch :</b>	Leichte Kinder-Steppjacke mit Kapuze
<b>Español :</b>	Chaqueta acolchada ligera con capucha para niño
<b>Italiano :</b>	Piumino bambino leggero con cappuccio
<b>Português :</b>	Blusão de criança acolchoado leve com capuz

COLORS	PANTONE SERIGRAPHIE
Black	Black
Navy	296C
Light royal blue	653C
Red	200C

MEASUREMENT						
Description	6/8	8/10	10/12	12/14		
<b>H05</b> Hauteur totale terminée/ Total height after sewing <b>-5%</b>	47,50	53	57,75	62,50		
<b>W05</b> 1/2 largeur poitrine terminée/ 1/2 chest width after sewing <b>-2%</b>	39,50	42,50	45,50	48,50		
<b>H15</b> Longueur manche / Sleeve length <b>-5%</b>	47,25	53,50	57,25	61		

CARE LABEL				

PACKING	
Box	5 pcs / box All size => L:46cm W:35cm H:14cm GW:2.8kg NW:2kg