

# KARIBAN

**REFERENCE :** K650

**SIZES :** S\_M\_L\_XL\_XXL\_3XL\_4XL

**COMPOSITION :**

Fabric 1 : Softshell Polyester / Elastane woven 95/5 - 300 95% polyester / 5%elastane

Lining : Polyester 210T - 60 For quilted body and hood lining, hood tunnel and sleeve lining 100%polyester

Lining 2 : Polyester polytricot - 120 For pocket sacks and inner front placket. 100%polyester

Padding : Polyfil 120 For quilted body lining 100%polyester

Padding : Polyfil 100 For quilted sleeve lining 100%polyester

**WEIGHT :**

Fabric 1 : 300 gsm

Lining : 60 gsm

Lining 2 : 120 gsm

Padding : 120 gsm

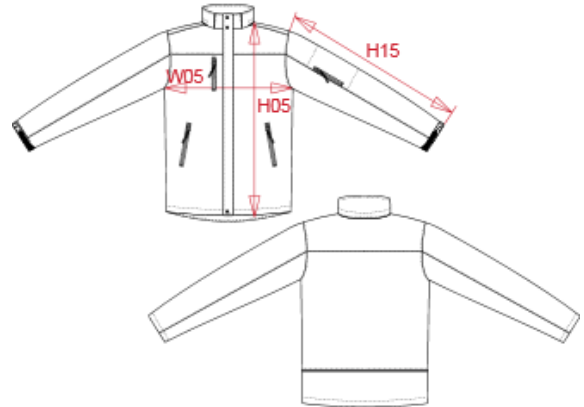
Padding : 100 gsm

**FABRIC CONSTRUCTION AND FINISHING :**

3 layers bonded (outer: 95%polyester 5%elastane / performance membrane / inner: microfleece polar) BR: 3000gsm/24h / WP: 8000mm

**ARTICLE WEIGHT :**

1200 gr/pc



DESCRIPTION	
<b>Français :</b>	Parka softshell doublée capuche homme
<b>English :</b>	Men's hooded softshell lined parka
<b>Nederlands :</b>	Gewatteerde softshell herenparka met capuchon
<b>Deutsch :</b>	Herrenparka Softshell wattiert mit Kapuze
<b>Español :</b>	Parka Softshell forrada con capucha para hombre
<b>Italiano :</b>	Parka uomo softshell imbottito con cappuccio
<b>Português :</b>	Parka Softshell acolchoada de homem com capuz

COLORS	PANTONE SERIGRAPHIE
Black	Black
Navy	296C
Titanium	7540C

MEASUREMENT							
Description	S	M	L	XL	XXL	3XL	4XL
<b>H05</b> Hauteur totale dvt / Front total height	72	74	76	78	80	82,75	84,75
<b>W05</b> 1/2 largeur poitrine / 1/2 chest width	56	59	62	65	68	72	75
<b>H15</b> Longueur manche / Sleeve length	66	68	70	72	74	76,75	78,75

CARE LABEL				

PACKING	
Box	10 pcs / box S-M => L:60cm W:40cm H:38cm GW:12.50kg NW:11.20kg L-XL => L:63cm W:42cm H:38cm GW:12.80kg NW:11.70kg XXL-4XL => L:66cm W:45cm H:38cm GW:16.50kg NW:15.20kg