

# KARIBAN

**REFERENCE :** K9106

**SIZES :** S\_M\_L\_XL\_XXL\_3XL

**COMPOSITION :**

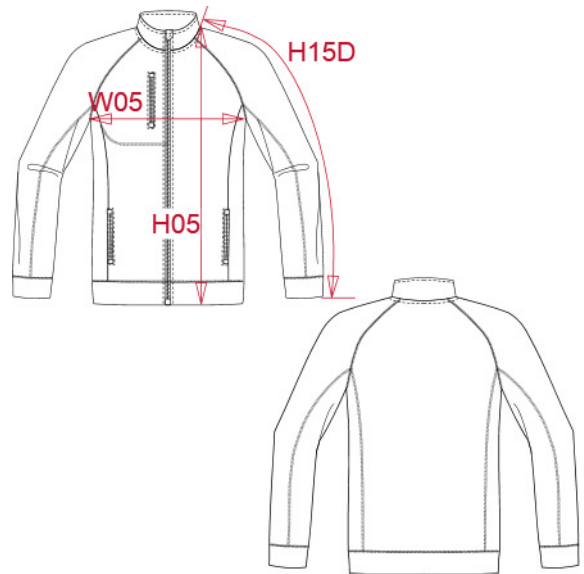
Main fabric : Inside brushed polyester jersey - 345 100% polyester

**WEIGHT :**

Main fabric : 345 gsm

**ARTICLE WEIGHT :**

690 gr/pc



| DESCRIPTION   |
|---|
| <b>Français :</b> Veste zippée chinée homme                 |
| <b>English :</b> Men's full zip heather jacket              |
| <b>Nederlands :</b> Men's full zip heather jacket           |
| <b>Deutsch :</b> Herren-Weste mit Reißverschluss, aus Chiné |
| <b>Español :</b> Chaqueta jaspeada con cremallera de hombre |
| <b>Italiano :</b> Giacca screziata uomo con zip             |
| <b>Português :</b> Casaco de homem em malha mesclada        |

| COLORS            | PANTONE<br>SERIGRAPHIE |
|-------------------|------------------------|
| Navy melange      | -                      |
| Dark grey melange | -                      |

| MEASUREMENT  |       |       |       |    |       |       |  |
|--|-------|-------|-------|----|-------|-------|--|
| Description  | S     | M     | L     | XL | XXL   | 3XL   |  |
| <b>H05 (M)</b> Hauteur totale / Total height                                     | 70    | 72    | 74    | 76 | 78    | 80    |  |
| <b>W05 (M)</b> 1/2 largeur poitrine / 1/2 chest width                            | 51    | 54    | 57    | 60 | 63    | 66    |  |
| <b>H15D</b> Longueur manche raglan avec poignet / Raglan sleeve length with cuff | 79,75 | 81,50 | 83,25 | 85 | 86,75 | 88,50 |  |

| CARE LABEL |
|------------|
|            |

| PACKING |   |
|---------|---|
| Box     | 10 pcs / box<br>S => L:56cm W:38cm H:32cm GW:7kg NW:6kg<br>M => L:56cm W:38cm H:32cm GW:7.5kg NW:6.5kg<br>L => L:56cm W:38cm H:32cm GW:8kg NW:7kg<br>XL => L:60cm W:40cm H:32cm GW:8.5kg NW:7.5kg<br>XXL => L:60cm W:40cm H:32cm GW:9kg NW:8kg<br>3XL => L:60cm W:40cm H:32cm GW:9.5kg NW:8.5kg |