

# PROACT.®

REFERENCE : PA005

SIZES : XS\_S\_M\_L\_XL\_XXL

**COMPOSITION :**

Main fabric : Peached and Brushed Polyester / Elastane single jersey 88/12 - 200 88%polyester / 12%elastane

**WEIGHT :**

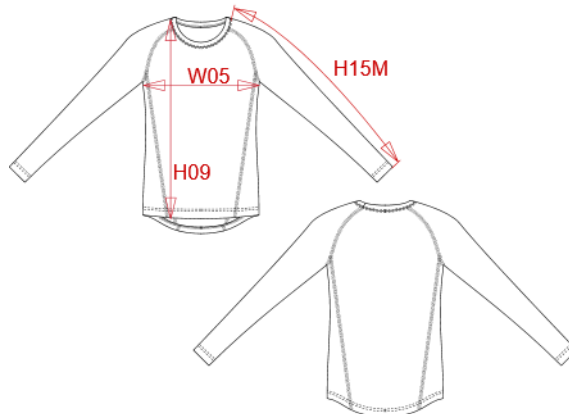
Main fabric : 200 gsm

**TECHNICAL DETAIL :**

Quick dry fabric

**ARTICLE WEIGHT :**

192 gr/pc



DESCRIPTION
<b>Français :</b> T-SHIRT DOUBLE PEAU SPORT MANCHES LONGUES UNISEXE
<b>English :</b> Long sleeve skin tight "Quick Dry" T-shirt
<b>Nederlands :</b> Thermoshirt lange mouwen
<b>Deutsch :</b> LANGARM DOPPELHAUT T-SHIRT SCHNELLTROCKNEND
<b>Español :</b> Camiseta de manga larga doble piel "Quick Dry"
<b>Italiano :</b> T-SHIRT MANICHE LUNGHE QUICK DRY
<b>Português :</b> T-shirt justa manga comprida "Quick Dry"

COLORS	PANTONE SERIGRAPHIE
Black	Black
White	White
Sporty red	1805C
Sporty royal blue	647C
Orange	1585C
Sky blue	283C
Green	7740C
Sporty navy	7546C
Sporty yellow	7408C

MEASUREMENT							
Description	XS	S	M	L	XL	XXL	
<b>W05 (M)</b> 1/2 largeur poitrine à 1.5cm de l'emmanchure / 1/2 chest width at 1.5cm below armhole	37	40	43	46	49	52	
<b>H09 (M)</b> Hauteur totale devant / Front total height	62,50	64,50	66,50	68,50	70,50	72,50	
<b>H15M (M)</b> Longueur manche longue raglan / Long raglan sleeve length	67,25	69,50	71,75	74	76,25	78,50	

CARE LABEL				

PACKING	
Box	25 pcs / box All sizes => L:37cm W:28cm H:28cm GW:5.80kg NW:5.00kg